

# FOLDING MEZZANINE LADDER, LAD-FM-108

APPROX WEIGHT: 350.57 lbs.  
 DOES NOT INCLUDE WEIGHT OF POWER OR PACKAGING!!!

\*\*\* ANY ADDITIONS, DELETIONS, OR OMISSIONS MUST BE CORRECTED ON THIS DRAWING AS THIS DRAWING WILL BE CONSIDERED ALL INCLUSIVE \*\*\*

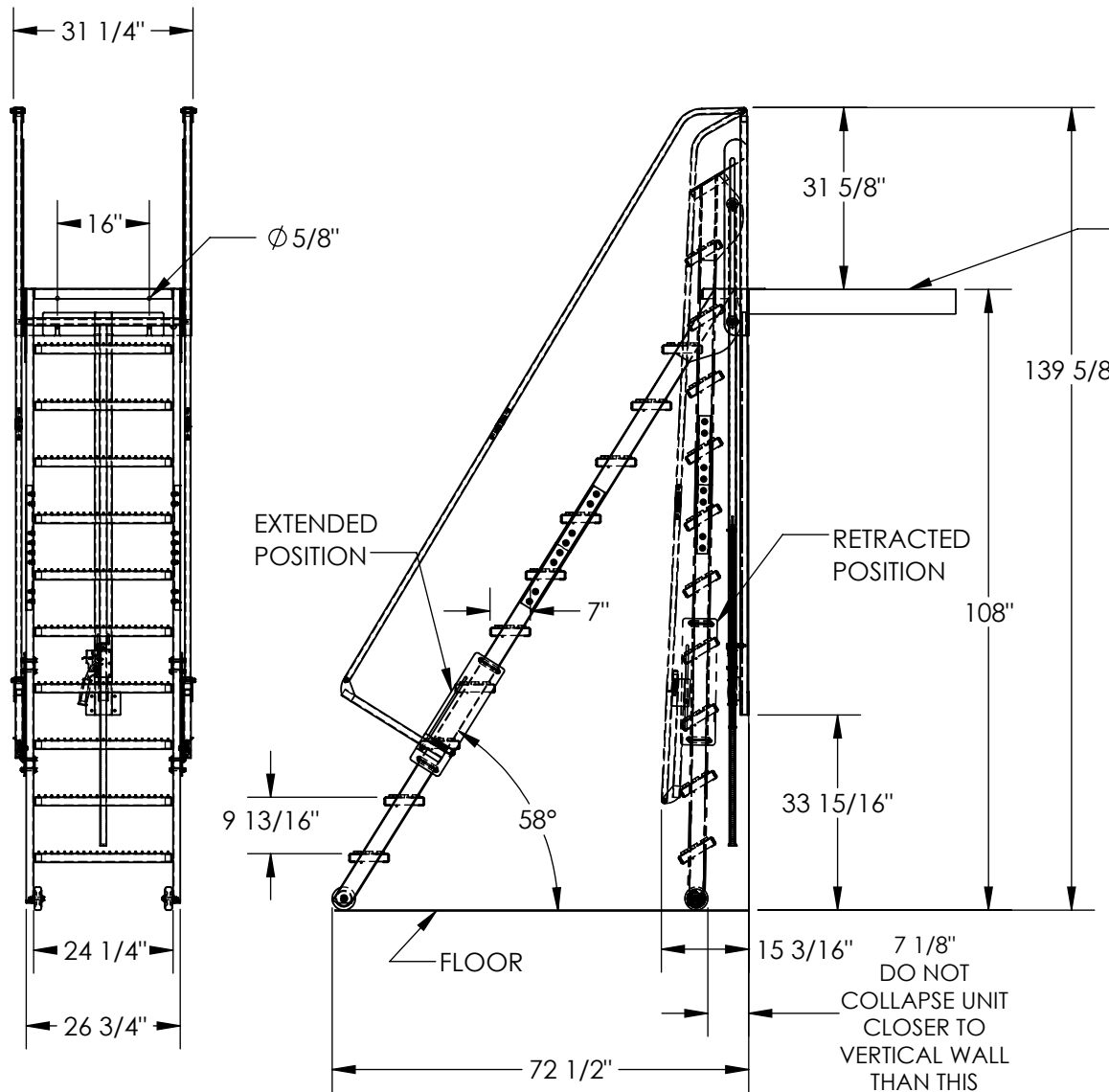
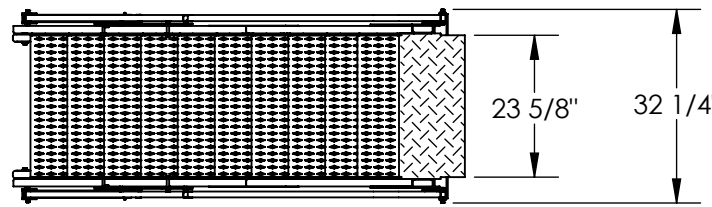
ALL GRAPHICS PROVIDED ARE FOR REFERENCE ONLY. IF CERTAIN DIMENSIONS ARE CRITICAL PLEASE VERIFY THOSE DIMENSIONS WITH YOUR SALESPERSON

## STANDARD FEATURES

MODEL NUMBER: LAD-FM-108  
 OVERALL WIDTH: 32 1/4"  
 USABLE STEP WIDTH: 24 1/4"  
 HANDRAIL HEIGHT: 31 5/8"  
 STEP MATERIAL: SERRATED STEEL  
 STEP DEPTH: 7"  
 MAX CAPACITY: 350 LBS.  
 MEZZANINE HEIGHT: 108"  
 (MEZZANINE HEIGHT TOLERANCE: ±1/2")  
 STEP HEIGHT SPACING: 9 13/16"  
 EXTENDED LENGTH: 72 1/2"  
 COLLAPSED LENGTH: 15 3/16" (APPROX.)  
 TOUGH BAKED IN POWDER COATED  
 BLUE AND YELLOW FINISH

## SPECIAL FEATURES

NONE



MEZZANINE SHOWN FOR REFERENCE ONLY -NOT INCLUDED

IT IS THE CUSTOMER'S RESPONSIBILITY TO MAKE SURE THAT THIS UNIT COMPLIES WITH ALL LOCAL SAFETY LAWS, CODES AND REGULATIONS

DIMENSION TOLERANCE ± 1/4"

FOR INTERNAL USE ONLY	
PROJECT SIGN OFF	
SALES	
ENG.	
FAB.	
POWER	

**APPROVAL**

I, THE UNDERSIGNED, AGREE THAT THE PRODUCT AS REPRESENTED SATISFIES DESIGN AND DIMENSION REQUIREMENTS. I ALSO ACKNOWLEDGE MY DUTY TO CONFIRM PRODUCT AND INSTALLATION COMPLIANCE WITH ALL APPLICABLE FEDERAL, STATE AND LOCAL REGULATIONS AND STANDARDS.

**ANY MODIFIED UNITS ARE NON-RETURNABLE**

[ ] As drawn [ ] As marked

Signed: \_\_\_\_\_ Date: \_\_\_\_\_

Printed Name: \_\_\_\_\_

LEAD TIME WILL START UPON RECEIPT OF SIGNED APPROVAL DRAWING

DISTRIBUTOR'S NAME:		P.O.#
VESTIL MANUFACTURING		X
DRAWN BY: TAW		W.O.#
DATE: 5/13/2016		X
REFERENCE: X	SCALE: 1:32	SALES: X
QUOTED LEAD TIME: X	QUOTE #	FILE NAME:
	X	44-007-594

7 1/8"  
 DO NOT  
 COLLAPSE UNIT  
 CLOSER TO  
 VERTICAL WALL  
 THAN THIS