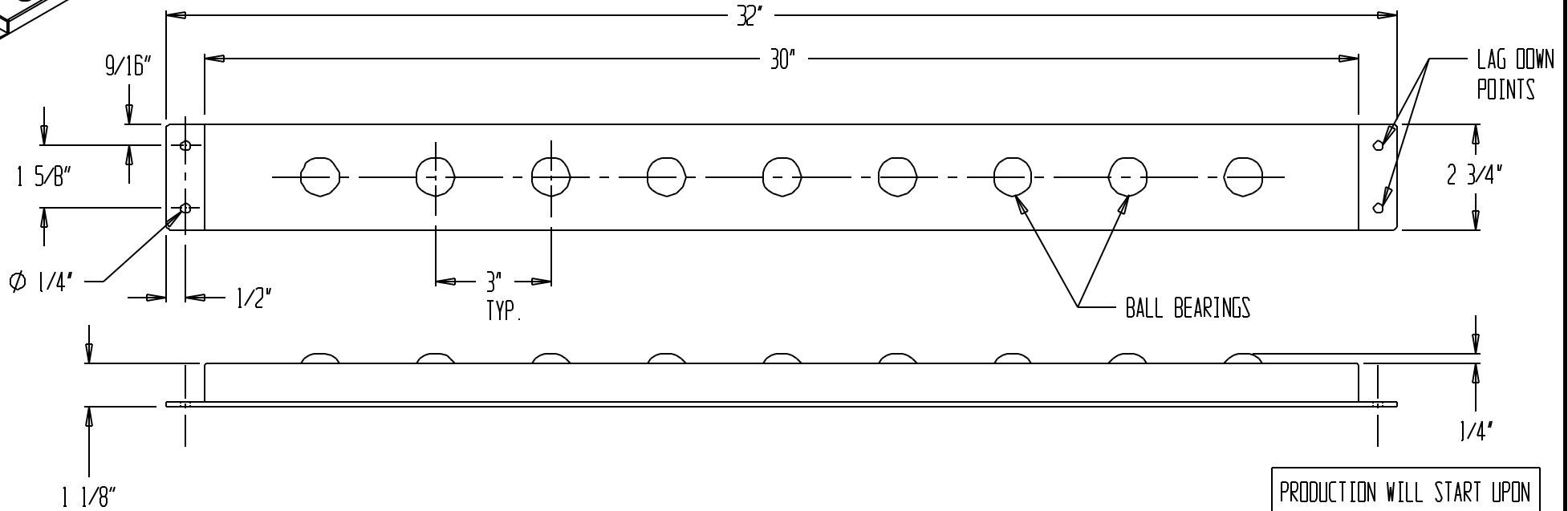
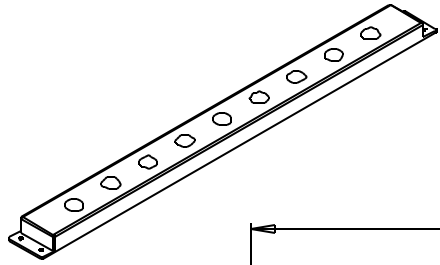


BALL TRANSFER STRIPS, BALL-S30



PRODUCTION WILL START UPON
RECEIPT OF SIGNED APPROVAL
DRAWING

STANDARD FEATURES

- MODEL NUMBER: BALL-S30
- LENGTH: 30"
- HEIGHT: 1 1/8"
- NO. OF BALL BEARINGS: 9
- BALL SPACING: 3"
- BALL BEARING HEIGHT: 1/4"
- CAPACITY PER BALL: 75 LBS
- 4 LAG DOWN POINTS

**SPECIAL UNITS ARE NON-RETURNABLE
*AVAILABLE AT ADDITIONAL COSTS

APPROVAL

I, the undersigned, hereby approve this print
 As drawn As marked

This includes my approval of design & dimensions.
 Signed: _____
 Date: _____

DISTRIBUTOR'S NAME: T & S EQUIPMENT		P.O. #:
DRAWN BY:		W.O. #:
DATE:	REFERENCE:	SALES:
SCALE: 1:4		DRWG./FILE NAME: 30-007-042