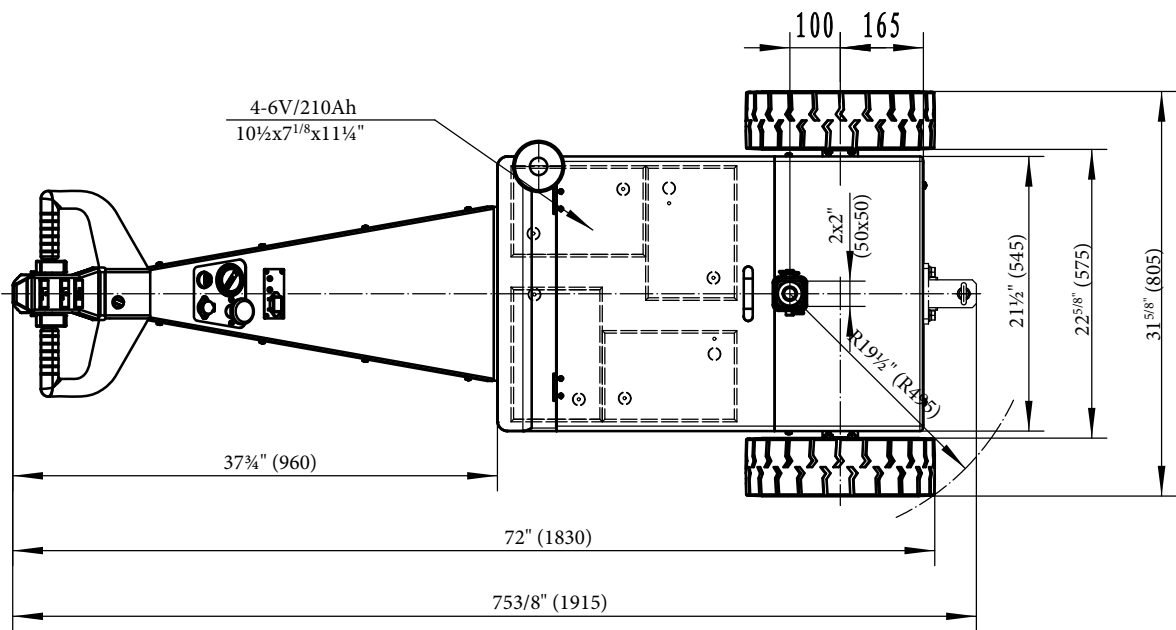
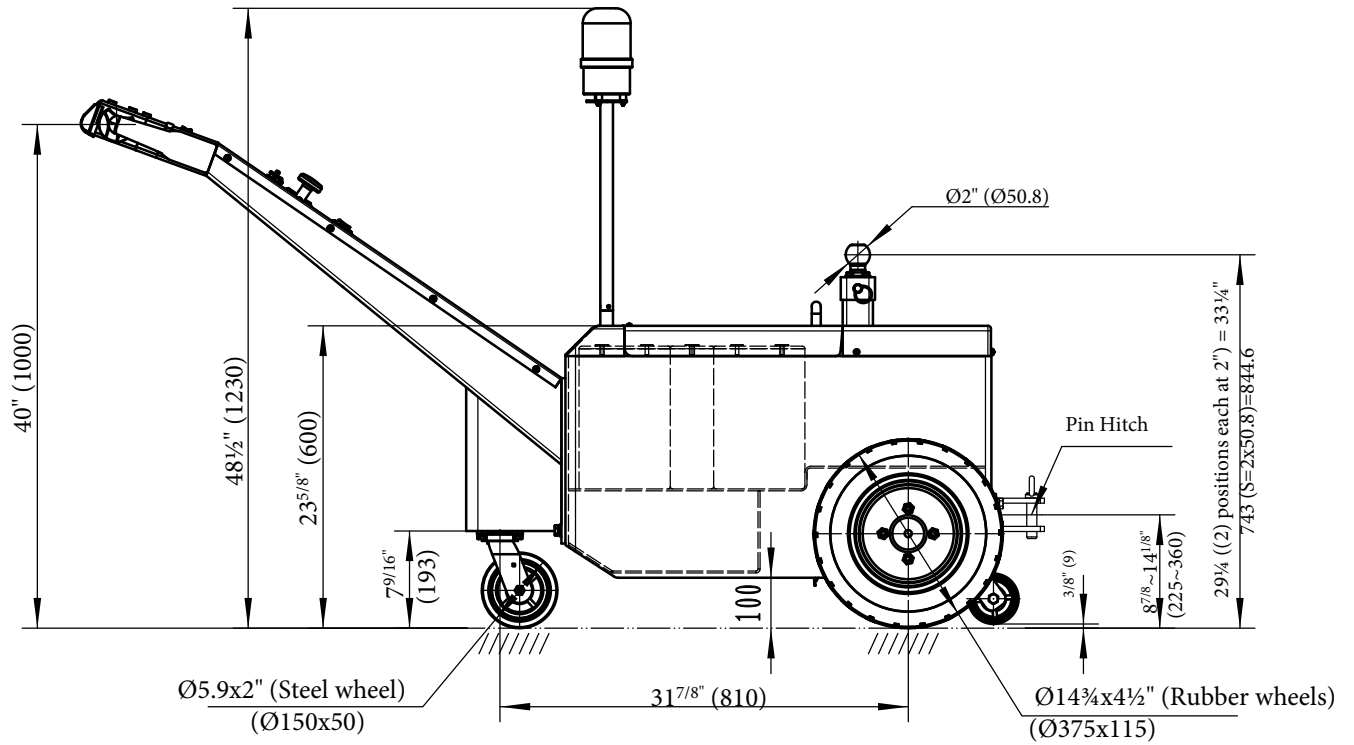


## E-TUG-HD-70 (ELECTRIC POWER MOVER)



**Specifications:**

Model: E-TUG-HD-70

Capacity: 7,000 lbs

Drive: C05-142H-1500-24-2400

Gear Ratio: 57:1

Drive Motor: 24V/1500W

Controller: 1237-2425

Battery: 4x6V/210Ah

Charger: 24/2x10amp

Speed w/o Load: 2~2.5 mph

VESTIL MANUFACTURING CORP.	
Model:	E-TUG-70-HD
Description:	Electric Powered Mover
DESIGN: TM	DATE: 08/14/20